

# RILEY PARK COMMUNITY GARDEN

“A community space tackling food insecurity while enhancing community engagement”

## The Garden

Riley Park Community Garden (RPCG) is a garden space whose produce supports their aim to tackle community food security in partnership with local businesses & organizations.

## Community Food Security

All people in a community have access to safe, culturally acceptable, nutritionally adequate food through a sustainable food system that maximizes self reliance and social justice.

## What They Do

Community outreach through educational workshops, luncheons, produce show and tells, tastings, and weekly harvests and growing food that supports the community residents needs and food security.

## Who is Served?

Groups, families, immigrants, and newcomers who are food insecure and community organizations that aid these people.

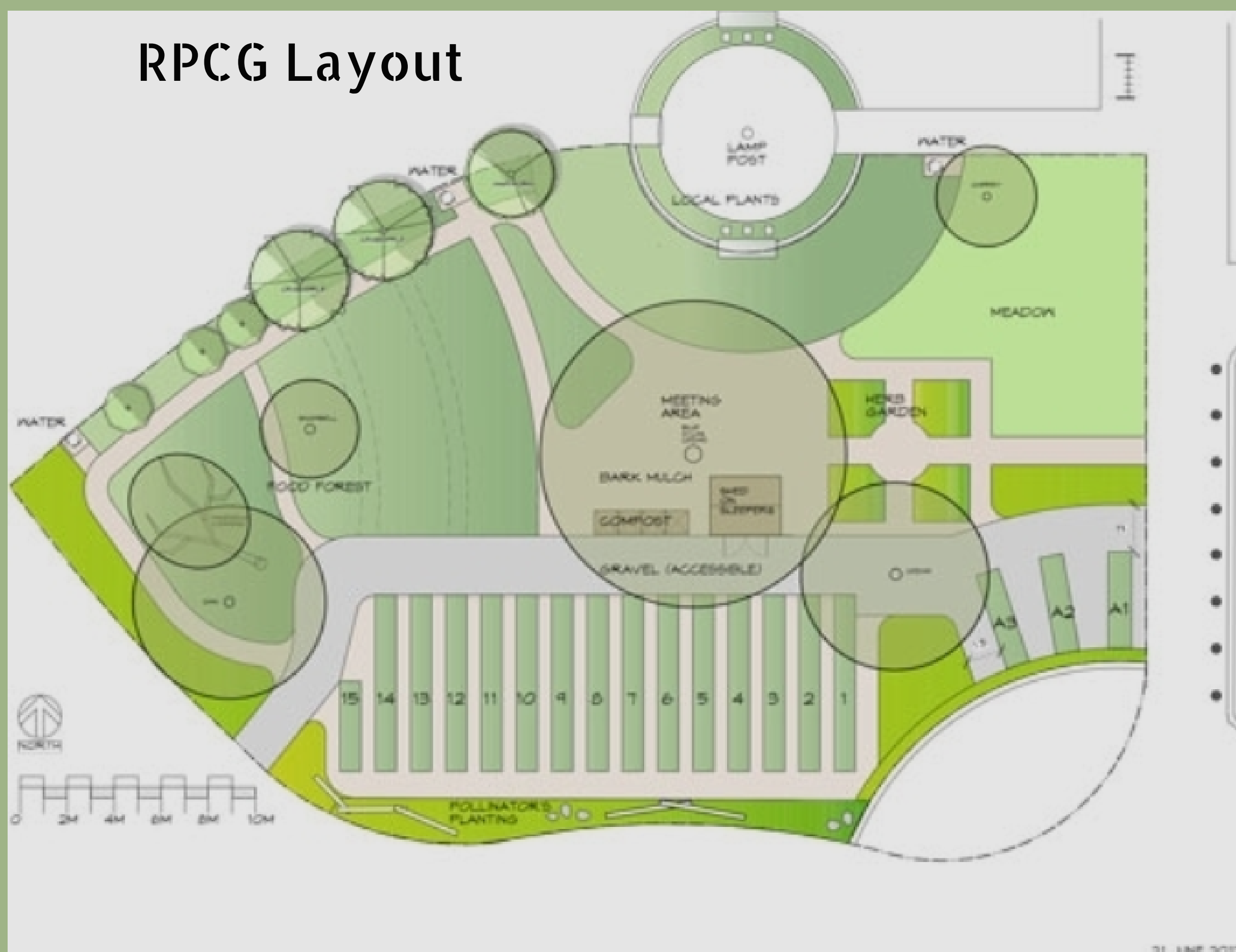
## Stakeholders



**Little Mountain  
Neighbourhood House**  
neighbour helping neighbour



## RPCG Layout



## Our Task

We partnered with the RPCG to create a survey that addresses the garden's participation in order to develop a strategy that:

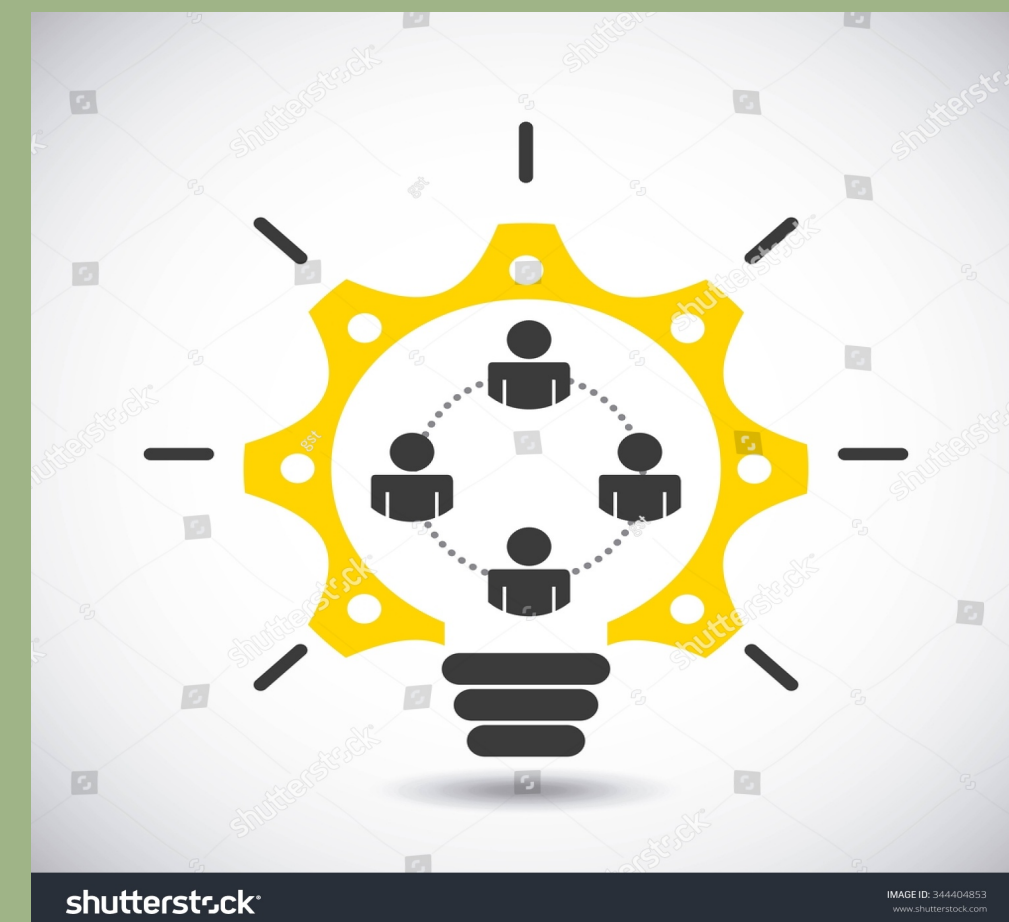
- increases garden promotion
- recruits community members who experience food insecurity through strengthened ties with organizations who serve those who are food insecure.

Food insecurity: the state of being without reliable access to a sufficient quantity of affordable, nutritious food

## Collaboration

Attended multiple meetings with RPCG stakeholders, and collaborated with the RPCG community coordinator to:

- target and enhance relationships with organizations that are no longer involved with the garden but serve those experiencing food insecurity in Riley Park.



## What We Created

A survey asking questions concerning the role that key community partner organizations play and their viewpoints of the garden. The information gathered from the interviews will help the RPCG obtain a better understanding of what the garden is lacking in order to get more people involved and deliver food to those that need it.

Food insecure: an individual without reliable access to a sufficient quantity of affordable, nutritious food

## Future Actions

The implementation of the survey to interview the identified key community organizations. The data collected can be analyzed to determine the gardens strengths and weaknesses. It can also identify who the garden serves, what programs it should provide, and what actions can be taken to involve more people. The results can aid the development of the 2019 strategic plan and its goal of enhancing food security.

## Sources

Riley Park Community Garden. (n.d.) Retrieved November 21, 2018, from <https://www.rileyparkgarden.org/>

<http://lfs350.landfood.ubc.ca/community-projects/2018-fall-projects/riley-park-community-garden/>

<https://pixabay.com/en/jigsaw-puzzle-pieces-solution-40975/>



a place of mind

THE UNIVERSITY OF BRITISH COLUMBIA

**Land and Food Systems**