



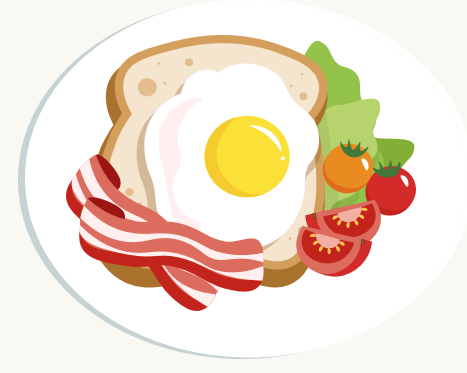
# Ray-Cam

Cooperative Centre  
Farm2Family Program

## WHAT THEY DO <sup>[1]</sup>



- Provide free community programming to residents of the Downtown East Side (DTES) since 1976
- Provide free meal programs (e.g. breakfasts for children and group meals for seniors)
- Provide emergency food access and weekly Backpack program



- Improve food access in the DTES
- Support low-income families experiencing food insecurity
- Improve overall health of the neighborhood



## RAY-CAM'S GOALS

Build capacity, skills and employability of local community members in the area of food acquisition, storage and preparation and delivery throughout all centre programs <sup>[1]</sup>

## OUR PLAN TO HELP RAY-CAM CONNECT FARMS TO FAMILIES

### Contact



### Prepare



### Interview



Update/expand Ray-Cam's pre-existing list of contact information for local farmers

Contact local farmers via email to request food donations



Generate list of interview questions to assess how community members facing food insecurity would like to see food donations utilized at Ray-Cam



Interview individuals and families experiencing food insecurity about how they would like to see food donations from farms used at Ray-Cam

## RESULTS

### Farmer Responses <sup>[3]</sup>

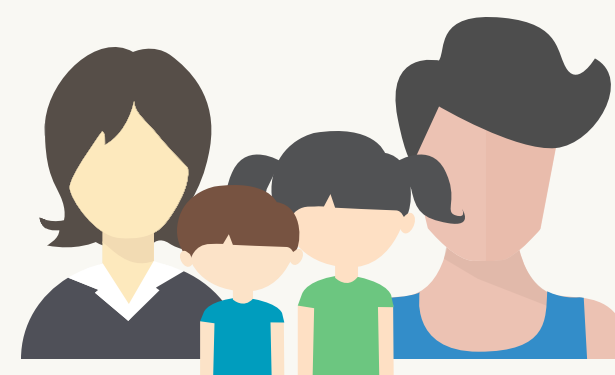
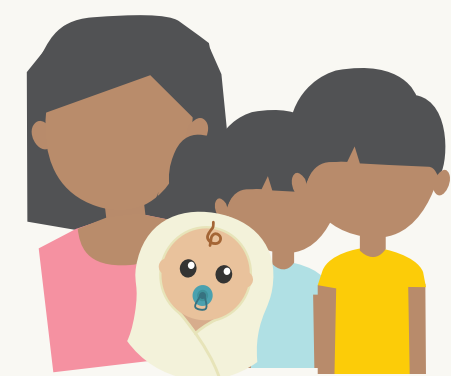
7

farms responded and agreed to partner with Ray-Cam and donate produce



### Community Responses <sup>[4]</sup>

"I would love if we had a day we could come and get fresh veggies and fruit and milk and eggs ... having access to this on a weekend day would be amazing." - Mother of 3



"If we had a ... cooking program on the weekends where we could cook good food for our families and then be able to bring home more vegetables it would be great for my house." - Family of 4

"I have to buy a lot of food to feed my kids. I do not get a lot of money so it is always hard for me. My kids always complain there isn't enough green things to eat and apples." - Mother of 6



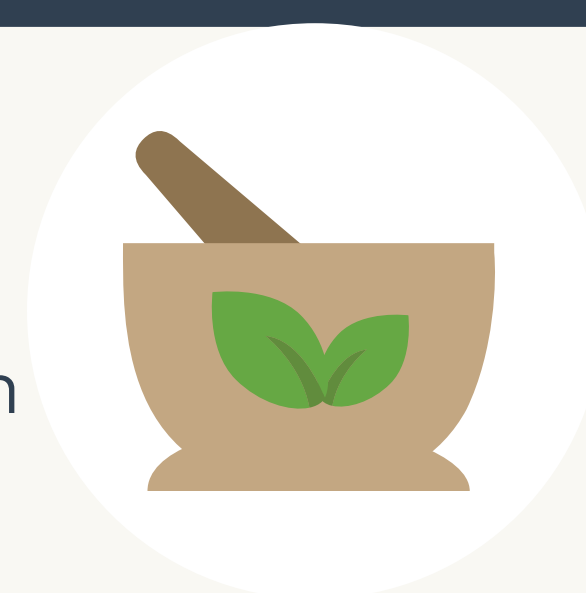
## RAY-CAM'S FUTURE PLANS & PROJECT TAKEAWAYS



Implement community member run community store framework that allows food donations from farms to be distributed to the community on the weekends



Apply for grants to support Ray-Cam's food programs using research from project



Develop new cooking workshops using the food donations, or implement the new donated foods into existing meal programs and/or workshops

### References:

1. Ray-Cam Cooperative Centre. (n.d.). Retrieved from <http://lfs350.landfood.ubc.ca/community-projects/2018-fall-projects/ray-cam-cooperative-centre/>
2. Mathie, A., & Cunningham, G. (2003). From clients to citizens: Asset-based Community Development as a strategy for community-driven development. *Development in Practice*, 13(5), 474-486. Retrieved from <https://www.tandfonline-com.ezproxy.library.ubc.ca/doi/abs/10.1080/0961452032000125857>
3. Rahmberg, C. Personal communication, November 14, 2018
4. Rahmberg, C. Personal communication, November 22, 2018

Want to donate or volunteer?  
Find out more at  
[raycam.com!](http://raycam.com!)

