



Effective Crop Planning to Maximize Yield in Urban Farming

GORDON NEIGHBOURHOOD HOUSE (GNH)



GNH's mission:

- supports West End community (1)
- believes food can bring people together (1)
- commits to increasing food security (1)

3 urban farm sites:

- Crystal Court
- Jervis
- Nicola
- a total of 35 plots (~35meter square)

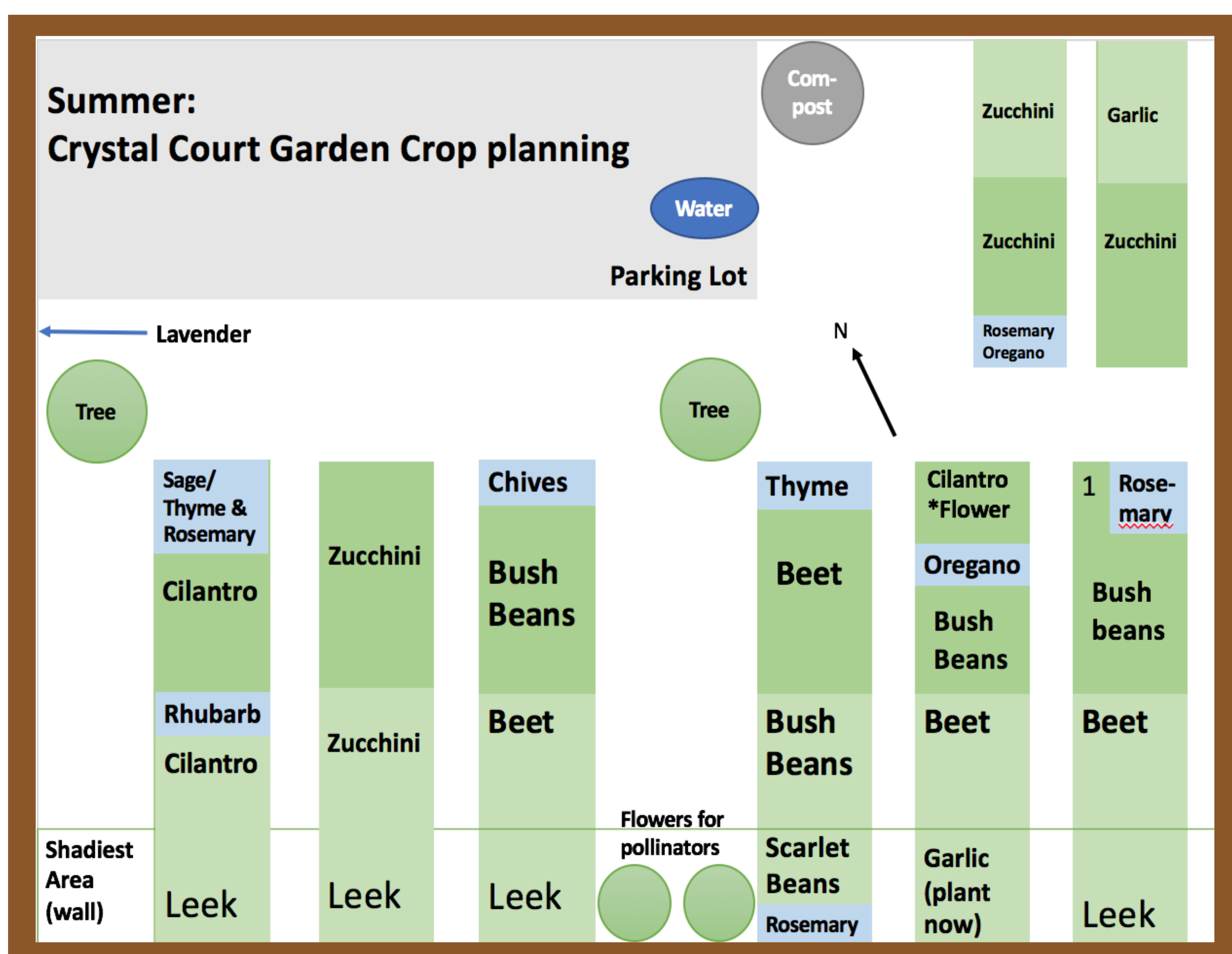
Why plan crops?

- ensure quality and amount of fresh food produced to support food initiatives (community lunch program & farmers' markets) (1)

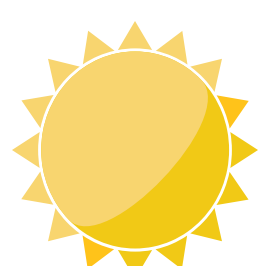
OUR OBJECTIVE

To design a crop plan that maximizes the yield and sustainability of the GNH urban farming network.

OUR FINDINGS



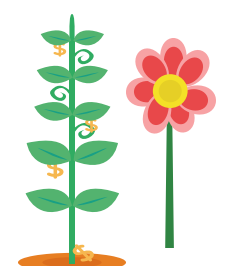
Factors considered:



Seasonality



Crop Rotation



Companion Crops



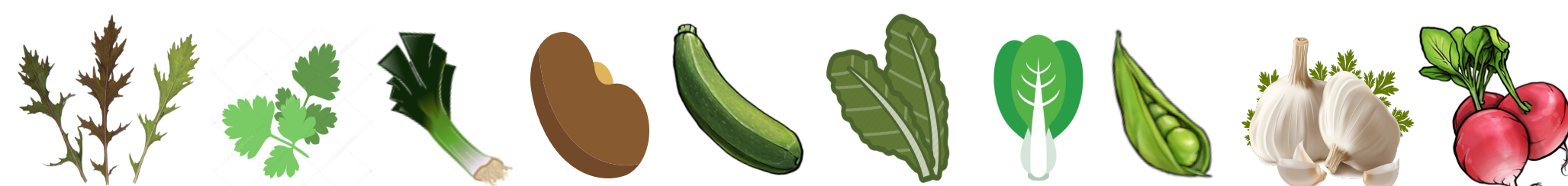
Pollination

OUR APPROACH



Communication with GNH's head farmer

- learn about GNH's needs
- avoid overlaps and implement crop rotation
- learn about what crops failed to grow in previous years
- find out which seeds the GNH had in stock
- decide the GNH's top 10 crop choices:

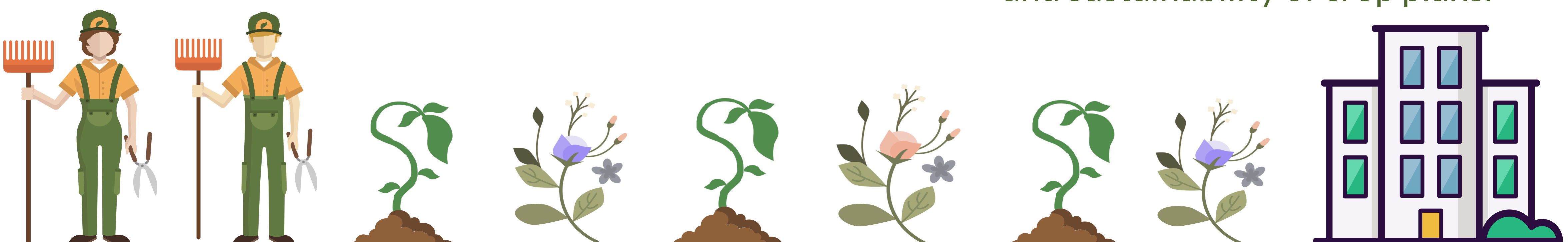


West Coast Seed Catalogue

- determine timing of growth, crop rotation, and companion cropping methods

OUR TAKE HOME MESSAGES

1. Planning the top 10 crops maximizes yields for the food services offered by the GNH, which aim to promote community food security.
2. Companion cropping, seasonality, crop rotation, and pollination are important to consider in the efficiency and sustainability of crop plans.



Reference:

1. Gordon Neighbourhood House. (2018). Urban Farming Initiatives. Retrieved March 20th, 2018 from <https://gordonhouse.org/programs/farming-initiatives/>