

ASSET MAP WITH Immigrant Services Society of BC

Community Asset Mapping focusing on New Immigrants in the City of Surrey

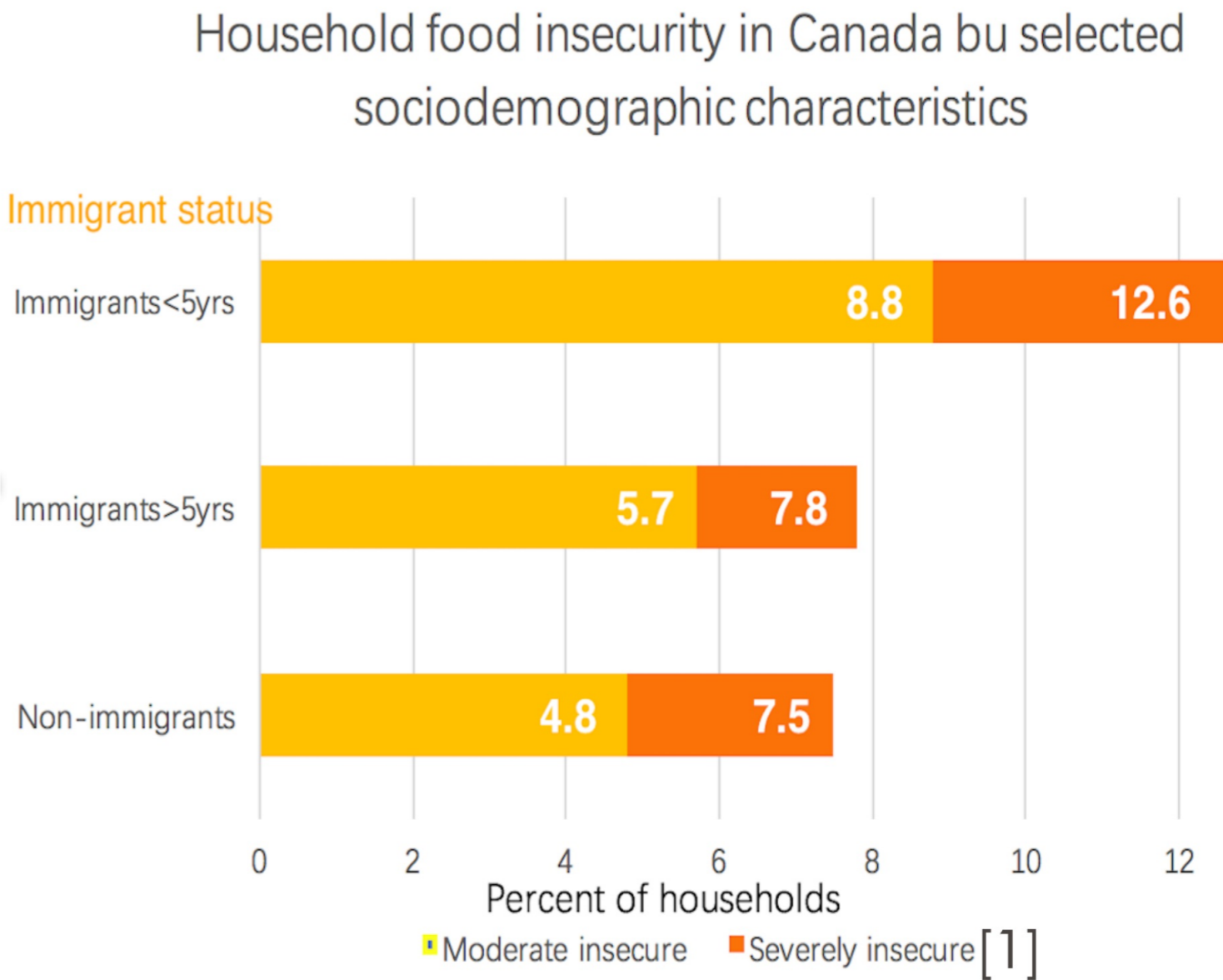
1 THE ISSUE AND WHY IT MATTERS



Community food security exists when “all community residents obtain a safe, culturally acceptable, nutritionally adequate diet ” [3].

If households’ quality and availability of resources are at risk

hunger, malnutrition & negative effects on health would generate[4].



New and recent immigrants are considered to be one of the most vulnerable groups in food justice.[2]



OUR PROJECT'S PURPOSE

To establish a easy-to-visualise food asset map to locate stores where the new immigrants could get access to affordable, cross-culturally appropriate food resources.



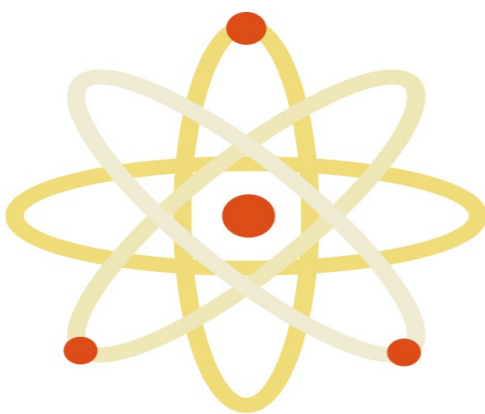
A not-for-profit organization which assists new immigrants in adjusting to life in Canada.

2 APPROACHES AND WHAT WE'VE FOUND

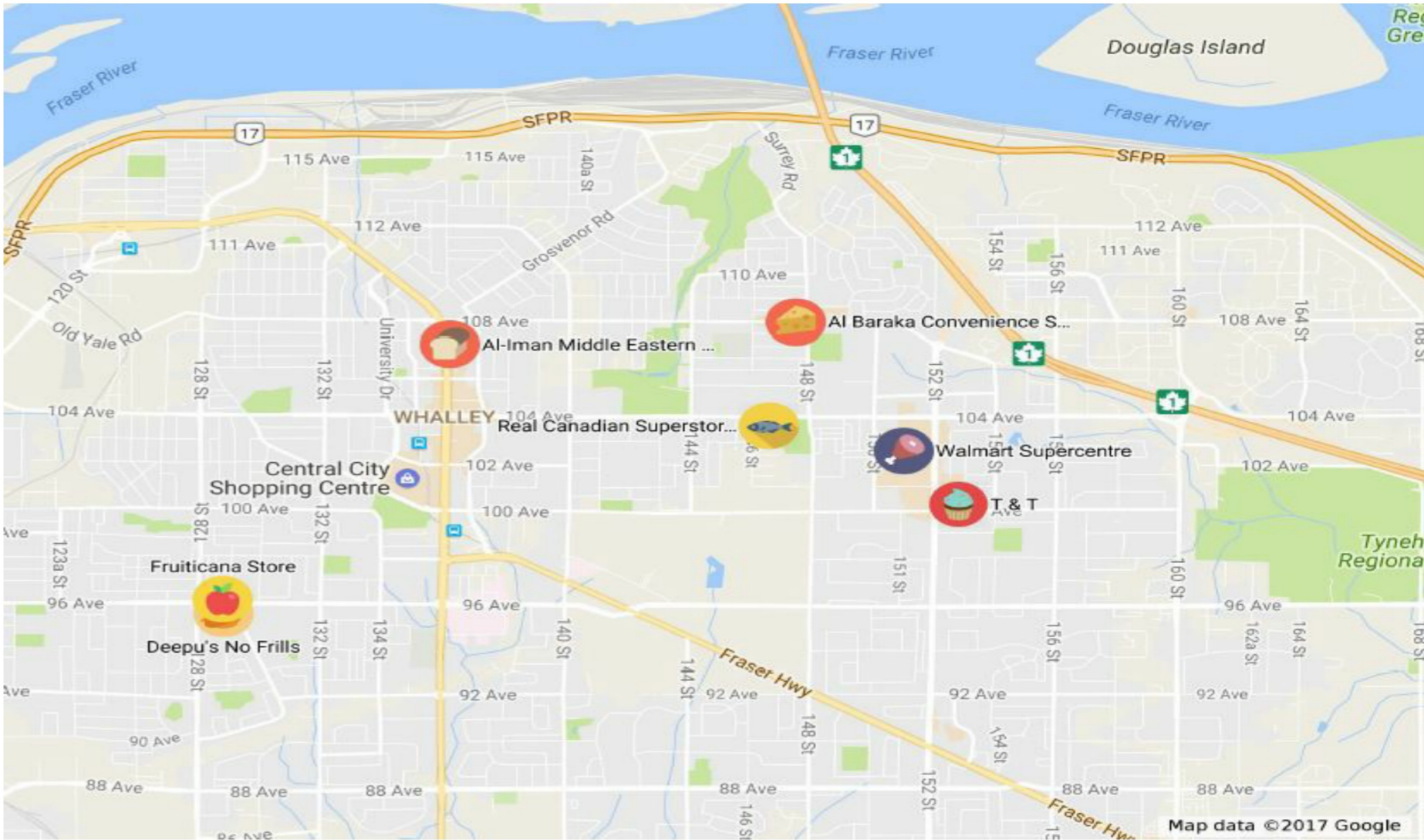
Consult the seniors



Conduct web search based on the information



Assess suitability& Rating criteria based on cost, accessibility &product availability



3 TO THE FUTURE



Utilize the food asset map as an initiative approach of supporting and shaping the community food security for the vulnerable.



Upgrade the and integrate the map with technology into phone apps to encourage wider usage.

[1]Health Canada. (2012). Household Food Insecurity In Canada in 2007-2008: Key Statistics and Graphics. Health Canada. Health Canada.

[2]Gottlieb, R., Joshi, A., & Project Muse University Press eBooks. (2010). Food justice. Cambridge, Mass: MIT Press.

[3]Hamm, M. W., & Bellows, A. C. (2003). Community food security: Background and future directions. Journal of Nutrition Education and Behavior, 35(1), 37–43.

[4]Campbell, C. (1991). Food insecurity - a nutritional outcome or a predictor variable. Journal of Nutrition, 121(3), 408-415.