

West Point Grey Legion

Food System Assessment

Group 2: Kathy Zhang, Ai Xin Wang, Zaixin Li, Tina Hung, Maggie Li, Yuqi Duan

The Issue

Assessment on kitchen infrastructure, food initiatives in West Point Grey Legion



No kitchen
The legion will redevelop and specifically consider the implementation of kitchen infrastructure

Food initiatives

- Meat draw
- Gift card
- Bursary



1

WHY IT MATTERS?



-Increasing number of elderly indicates potential food insecurity issue in this community



-Legion serves as a community helper to improve food security and social belonging in this region



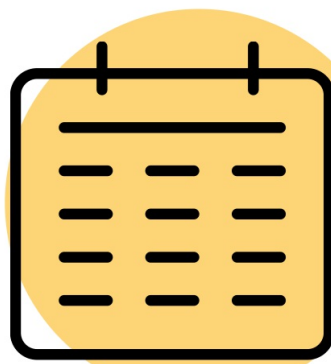
2

How we approach the issue?



Observations

A semi-structured qualitative method to explore phenomena.



How did we do observations

Simply recorded everything related to food, gave a brief description and took pictures as we start the visiting



Interviews

a type of qualitative analysis, helps to find detailed insights from individual participants in the community



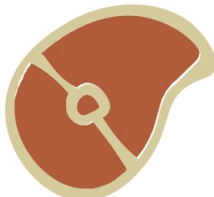
How did we interview

Two people (Vice President and a volunteer) were interviewed by verbally answering questions. Group members collected data by taking notes and briefly write down descriptions from respondents' answers.

3

What we found

-Meat draw



- Sunday afternoon
- \$3 for 1 meat draw
- All meats from IGA

-Donation from Remembrance Day → Bursary

- Only people with military background could apply
- For education fund or for retraining of soldier who come back from military or pay for their rent/ financial stress

-Events (Parties etc.)

- Order pizza or Chinese food from local restaurants
- People bring their own food

4

Take Home Message



People regard the West Point Grey Legion as a social place instead of somewhere to get food



The Legion is going to redevelop and will consider having a kitchen

Suggestion: The community can provide more food services for seniors in Legion and also encourages people around the community to help as volunteers while events holding. Legion could look for financial support from charity type companies if still find tax is an issue after renovation